

Brake Caliper DS 230 FEA

spring activated – electrohydraulically released

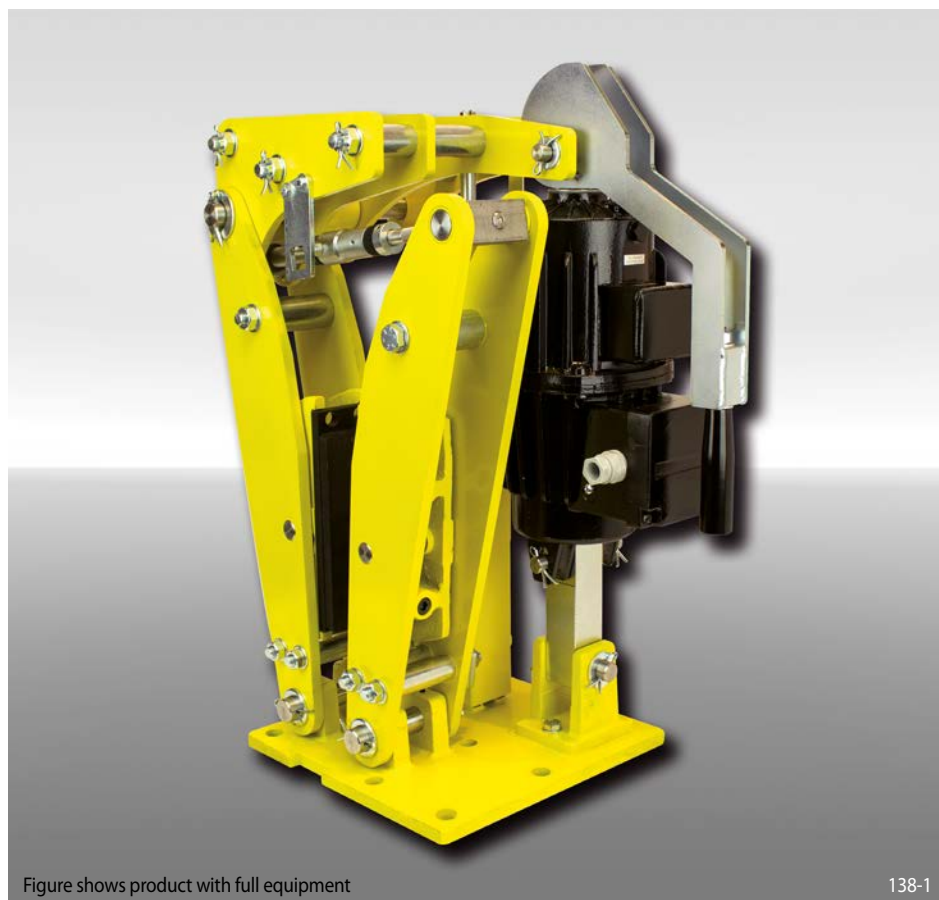


Figure shows product with full equipment

138-1

| Features | Code |
|---|------------|
| Brake Caliper | D |
| Disc Brake | S |
| Frame size 230 | 230 |
| Spring activated | F |
| Electrohydraulically released | E |
| Automatic adjustment to accommodate friction block wear | A |
| Thrusters 451, 452, 453 oder 454 are available | 451 to 454 |
| Thrusters mounted right or left available | R L |
| Thickness of brake disc 30 mm | 30 |

Example for ordering

Brake Caliper DS 230 FEA, thruster 453, thruster mounted right, thickness of brake disc 30 mm:

DS 230 FEA - 453 R - 30

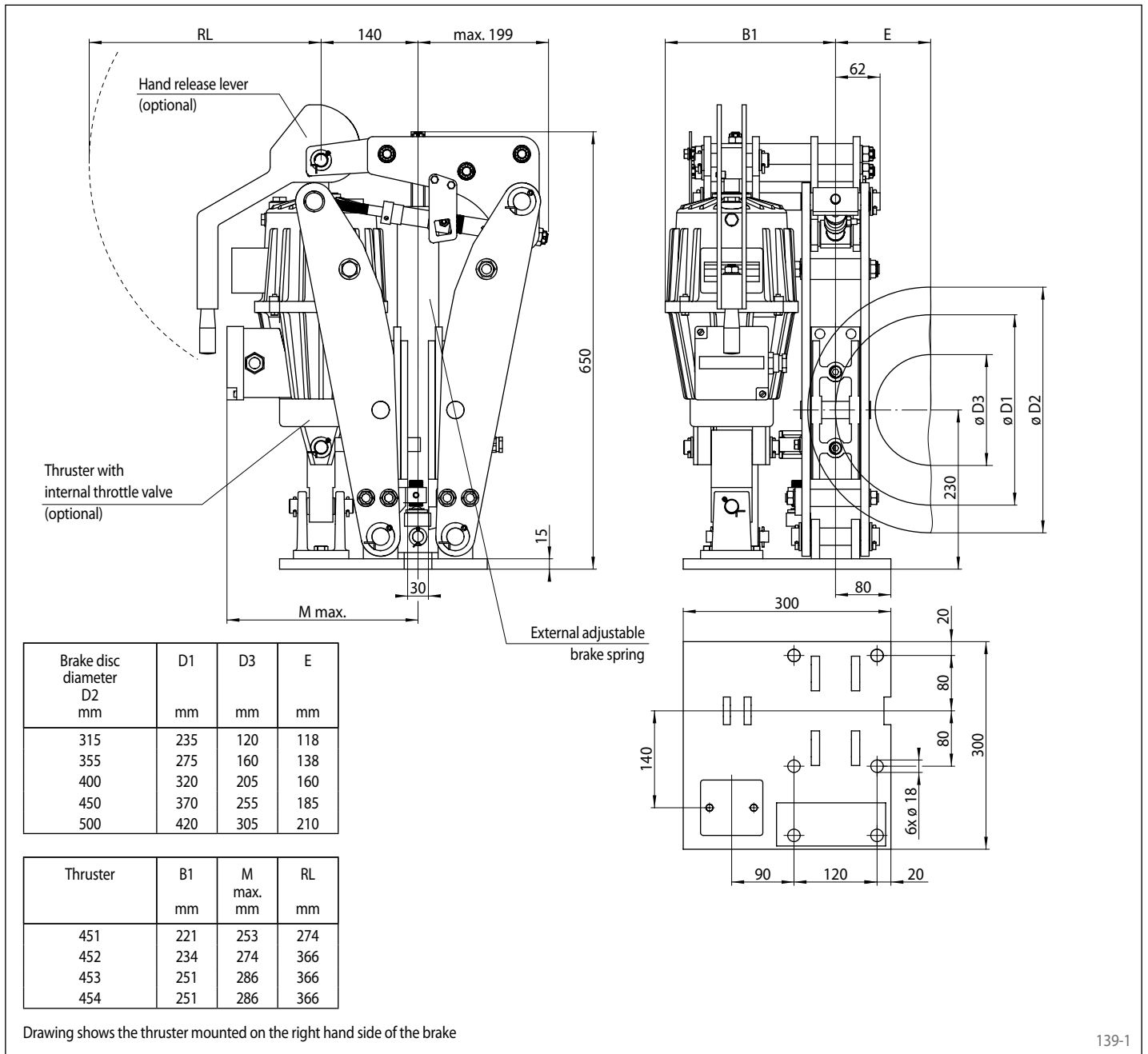
Technical Data

| | Brake Caliper DS 230 FEA | | | |
|---------------------------|--------------------------|-------------------|-------------------|-------------------|
| | with thruster 451 | with thruster 452 | with thruster 453 | with thruster 454 |
| Brake disc diameter | Braking torque | Braking torque | Braking torque | Braking torque |
| mm | Nm | Nm | Nm | Nm |
| 315 | 250 | 350 | 750 | 900 |
| 355 | 300 | 450 | 900 | 1050 |
| 400 | 350 | 500 | 1050 | 1200 |
| 450 | 400 | 600 | 1200 | 1400 |
| 500 | 450 | 650 | 1350 | 1600 |
| Clamping force | 2750 N | 4100 N | 8250 N | 9700 N |
| Braking torque adjustable | 20 - 100% | 20 - 100% | 20 - 100% | 20 - 100% |
| Nominal power | 130 W | 180 W | 240 W | 280 W |
| Oil volume | 1,4 l | 2,5 l | 3,5 l | 3,5 l |
| Voltage | 230/400 V | 230/400 V | 230/400 V | 230/400 V |
| Weight | 73 kg | 78 kg | 80 kg | 80 kg |

The braking torques shown in the table are based on a theoretical friction coefficient of 0,4.

Brake Caliper DS 230 FEA

spring activated – electrohydraulically released



139-1

Options

- Micro-switch wear control
- Micro-switch status control
- Micro-switch residual piston stroke warning
- Hand release lever
- Hand release lever with padlock
- Thruster with internal throttle valve
- Thruster in heat resistant design
- Corrosion protected design
- Friction lining of sintered metal
- Pneumatic cylinder instead of thruster
- Thruster also available in other voltages and frequencies